

# STAFF WORK SESSION

ORANGE COUNTY TRANSIT PLAN UPDATE

November 5, 2021

# WELCOME & INTRODUCTIONS

- Facilitation team:
  - Kate Ange, Renaissance Planning
  - Caroline Dwyer, Renaissance Planning
  - Scudder Wagg, Jarrett Walker & Associates
- Orange County staff:
  - Travis Myren
  - Tom Altieri
  - Thomas Ten Eyck
  - Theo Letman
  - Allyson Coltrane

# AGENDA

- Project timeline and work session goals
- Provider feedback key findings
  - Capital
  - Operational
  - Aspirational
- Recommendations
- Proposed conceptual vision map elements
- Measures of effectiveness
- Discussion
- Next steps

# WORK PLAN

# PROJECT SCHEDULE

TASK	DATE
Task 5A: Synthesize stakeholder feedback	<b>CURRENT</b>
Task 5B: Develop Draft Recommended Network and Plan	End of Nov. 2021
Task 5C: Assess Draft Recommended Network and Plan	
Task 5D: Conceptual Vision Map	
Task 1I: PSC Work Session 1	Early Jan. 2022
Task 5E: Service provider and PSC review and comment period	Dec. 2021- Jan. 2022
Task 6A: Engagement Wave 2 Materials and Preparation	Jan. 2022
Task 6B: Virtual and In-Person Wave 2 Engagement Strategies	Feb. 2022
Task 6C: Draft summary engagement themes	End of Feb. 2022
Task 6D: Final summary engagement themes	Mid Mar. 2022
Task 1I: PSC Work Session 2	Mid Mar. 2022
Task 7A: Implementation Plan and Schedule Methodology Memo	Mid Feb. 2022
Task 7B: Draft Implementation Plan and Schedule	End of Feb. 2022
Task 7C: Final Implementation Plan and Schedule	End of Mar. 2022
Task 8A: Annotated outline and design template	End of Dec. 2021
Task 1I: PSC Work Session 3	Mid Mar. 2022
Task 8B: Draft final report	End of Mar. 2022
Task 3C: Final final report	End of Apr. 2022

FEEDBACK

# CAPITAL

- Annualized costs of vehicle purchases
- Zero-emission vehicles
- Targeted transit infrastructure improvements on 15-501
- Bus stop improvements
- “Regional, scalable elements” to leverage and build on regional bus rapid transit
- Regional Transit Center\*
- CRT “extension” from West Durham to new Hillsborough train station

# OPERATIONAL

- Broad support for service improvements to N-S route, D route, and the 400/405 routes
- Recommendations for projects not included in either scenario including:
  - HS route
  - J route
  - Realignment to the Orange Alamance Connector to complement the adjusted ODX
- Reconsider 800 Route enhancements:
  - Current ridership levels do not support increased midday frequency
  - Not clear how it would be matched in Durham (not included in transit plan update)
- Reconsider ride-share/MOD/vanpool services reflected in the plan:
  - Regional demand response service in Orange County (currently in place in Durham and Wake)
  - Fund MOD as part of scenario A
  - Partner with PART and GoTriangle for vanpools in northern Orange County
  - Savings from proposed ODX re-alignment could possibly fund ODX improvements (30-minute peak service or midday service)



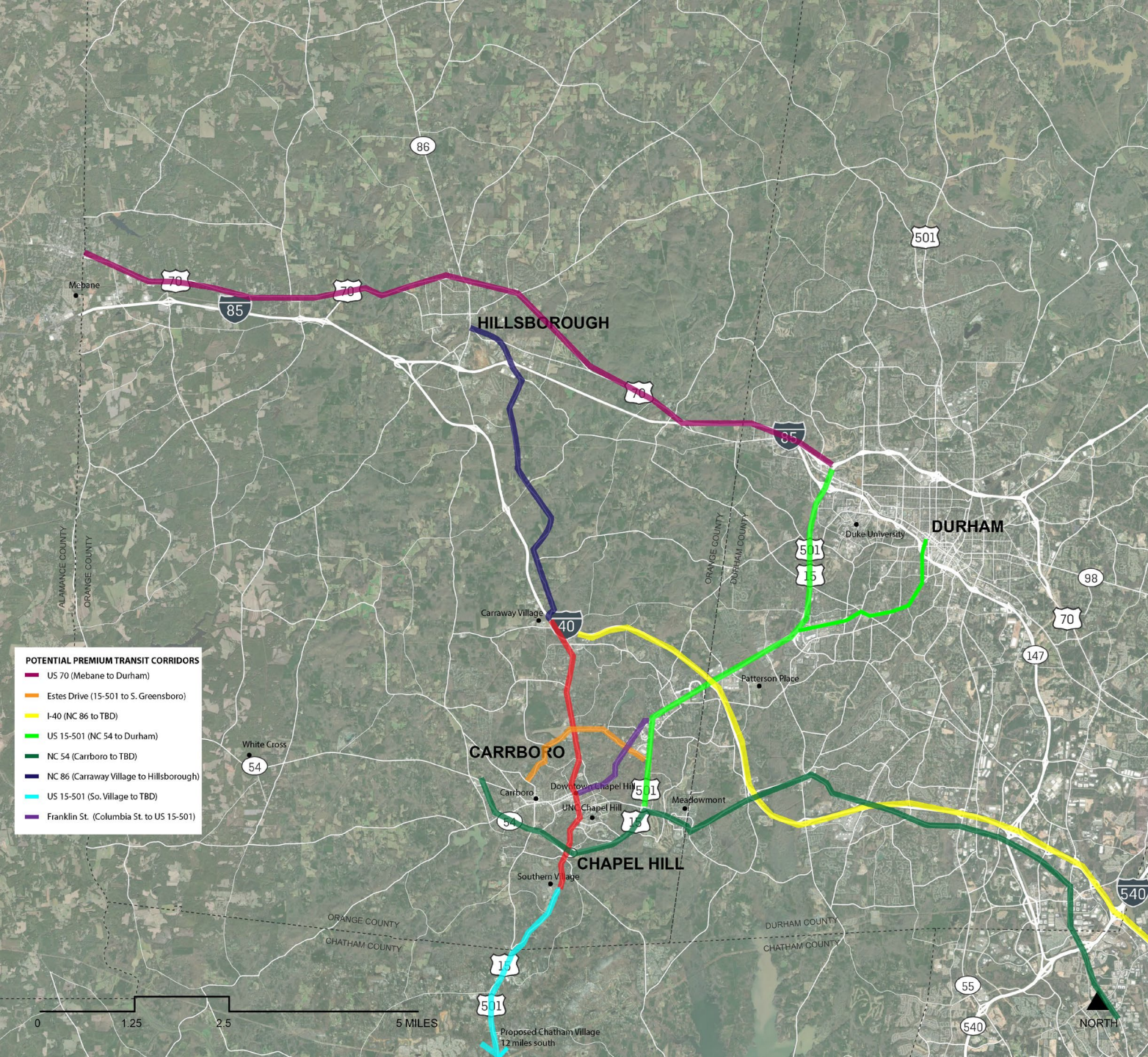
# ASPIRATIONAL

- Future potential for:
  - Improved service to Chatham County (Chatham Park)
  - Improved service between Hillsborough and Chapel Hill (on 86)
  - Bus rapid transit options for the NC-54 corridor (through White Cross) over the next 10-20 years

# OTHER COMMENTS

- Consider lack of state funding for next 2-3 years (DCHC)
- UNC's priorities are reflected in the Chapel Hill Transit's short range transit plan (UNC)
- Continued commitment to the N-S BRT is critical (UNC; CHT)
- Must be consistency between Durham and Orange plans for GoTriangle routes (GT)
- Encourage a focus on equity as a primary metric of success (RTA)
- Use a 2/3 "me" (Orange), 1/3 "we" (regional) framework (RTA)
- Support the implementation of Freeway And Street-based Transit (FAST) elements and treatments, including "transit advantage" infrastructure (RTA)
- Since the 2050 MTP must be fiscally constrained, make sure shared projects are not over-spending Orange revenues (TJCOG)

# CONCEPTUAL VISION MAP



## Potential Premium Transit Corridors:

- US 15-501: Chatham Park to Southern Village
- US 15-501: NC 54 to downtown Durham
- NC 86: between Hillsborough and Chapel Hill (I-40 interchange)
- NC-54: Durham through White Cross
- Estes Drive: 15-501 to S. Greensboro
- US 70: Mebane to Durham
- I-40: NC-86 to Raleigh

**Others?**

# KEY ELEMENTS

## **Potential Premium Transit Corridors:**

- US 15-501: Chatham Park to Southern Village
- US 15-501: NC 54 to downtown Durham
- NC 86: between Hillsborough and Chapel Hill (I-40 interchange)
- NC-54: Durham through White Cross
- Estes Drive: 15-501 to S. Greensboro
- US 70: Mebane to Durham
- I-40: NC-86 to Raleigh

# MEASURES OF EFFECTIVENESS

# VALUES

**Equity:** the plan intentionally supports and improves the lives of all residents, but especially those who are most vulnerable or who have the greatest need.

**Environmental sustainability:** the plan aims to improve environmental quality by increasing transit ridership, decreasing vehicle miles traveled, and reducing the need for single-occupancy vehicles.

**Economic prosperity:** the plan promotes transit service that supports job growth and economic development.

**Affordable and attainable quality of life:** the plan supports the financial security of Orange County residents by increasing transit access proximate to affordable housing and by locating jobs closer to robust transit networks. The plan also improves access for all to culture and opportunities.

**Transportation and access for all:** the plan considers connectivity and transit access for the most people in the most places, now and as projected for the future.

# MEASURES OF EFFECTIVENESS

VALUE	POTENTIAL MEASURES
Equity	Access to jobs by transit by type and earnings
	Access to community assets/ services
	Walk access to high-quality transit
Environmental Sustainability	Vehicle Miles Traveled (VMT) generated per household
	VMT generated per job
	GHG emissions (based on VMT)
Economic Prosperity	Access to jobs by transit disaggregated by job type (industrial, office, service, retail) and earnings (low, high)
	Transit access to jobs by time of day (to determine where transit consistently/reliably connects workers to jobs)
	Ease of off-peak transit commute based on span of service, disaggregated by weekday/ weekend
Affordable & Attainable Quality of Life	Access to community assets by transit
	Housing stock by affordability near frequent and all-day transit service
	Changes in H+T costs
Transportation & Access For All	Total population within walking distance of transit and share of total county population
	Total population within walking distance of high frequency transit and share of total county population
	Total population within walking distance of all day transit and share of total county population
	All above disaggregated by population characteristics (race, income, etc.)



# DISCUSSION & RECOMMENDATIONS

NEXT STEPS

# UPCOMING MILESTONES

TASK	DATE
Task 5A follow up: Documentation of 11/5 work session, decision points, and next steps to be shared on project website; provide draft recommendations to service providers for confirmation	11/22/2021
Task 5B: Develop Draft Recommended Network and Plan <i>Documentation of Draft Recommended Network and Plan including <b>project list</b>, estimated planning-level costs, and supporting graphics/ information</i>	11/30/2021
Task 5C: Assess Draft Recommended Network and Plan <i>Brief documentation of values identified during PSC retreat and review list of measures that will be used to assess draft Network and Plan; data analysis; graphics and narrative content describing findings</i>	
Task 5D: Conceptual Vision Map <i>Review list of components to be identified on map; draft Conceptual Transit Vision Map</i>	
Task 5E: Service provider review comment period ends	12/31/31
Task 1I: PSC Work Session 1 <i>After completion of Task 5, review draft network and plan and conceptual vision map; goal of this meeting is PSC "sign off" for moving into public feedback phase</i>	Early Jan. 2022
Task 5E (con'td): PSC review and comment period <b>ends</b>	2 weeks after PSC Work Session
Task 6A: Engagement Preparation <i>Draft and final materials describing and visualizing the Draft Network and Plan, the Conceptual Vision Map, and the results of the values assessment; draft and final questions for the online survey; Spanish translation of survey questions</i>	Jan. 2022
Task 6B: Virtual and In-Person Engagement Facilitation <i>Two (2) virtual transit focus group discussions; pop-up transit surveys; online survey</i>	Feb. 2022